

# EXIGE

## Lotus Cup Europe 2005



Lotus Exige Cup car: Powered by a mid-mounted 1.8 Toyota VVTL-i 2ZZ GE engine, utilising independent suspension with Ohlins 2 way adjustable dampers, adjustable anti-roll bar and limited slip differential.  
The Lotus Exige Cup car also has a full FIA roll cage with sports seats and four-point harnesses amongst other modifications.



Standard and Optional Features	Exige Cup Car
Interior Trim	Leather
Floor Covering	Carpet Mats
Central Door Locking	N/A
Four Speaker Audio Kit	N/A
Radio, CD-Player	N/A
Alarm and Immobiliser	N/A
Auxiliary Front Driving Lamps	Standard
<b>Technical Features Exige Cup Car</b>	
Engine	Mid mounted, transverse, 1796cc, 2ZZ-GE engine, Metal Matrix Composite (MMC) & aluminium lightweight and compact construction, 4 cylinders in line, water cooled, naturally aspirated with double overhead camshafts exploiting a Variable Valve Timing and Lift.
Engine Management	Lotus T4 engine control unit (ECU)
<b>System</b>	
Max Power	189bhp @ 7800 rpm
Max Torque	181 NM 6800 rpm
Power to Weight Ratio	TBC
0 - 60mph	TBC
Maximum Speed	TBC
Emissions Control	Three-way catalytic converter. Euro IV emissions compliant with full On-Board Diagnostics (OBD).
Transmission	C64 Gearbox, all aluminium lightweight construction, 6-speed, close ratio, constant mesh helical gears and LSD.
Chassis	Lotus designed lightweight structure of epoxy bonded aluminium alloy extrusions with tubular steel seat-belt support structure and lightweight steel rear subframe.
Suspension	Fully independent suspension utilising unequal length wishbones, Ohlins 2 way adjustable dampers, Eibach coaxial coil spring at each corner and front adjustable anti-roll bar.
Steering	Solidly mounted unassisted rack and pinion steering box with 2.8 turns lock-to-lock.
Brakes	Servo-assisted, track tuned 4-channel Anti-lock Braking System (ABS) with Lotus/AP - Racing twin-piston fixed aluminium alloy front calipers, Brembo single-piston sliding rear calipers and 288 mm diameter, 26 mm thick front and rear cast iron ventilated cross-drilled discs. Optional sports pads and hoses.
Alloy Wheel finish	16-spoke lightweight cast alloy wheels - HPS
Tyres	Yokohama Advan A048
Front tyre size	195/50 R16
Rear tyre size	225/45 R17

Gear Ratios	First	3.116:1
	second	2.050:1
	Third	1.481:1
	Fourth	1.166:1
	Fifth	0.916:1
	Sixth	0.815:1
	Reverse	3.250:1
	Final drive	4.529:1
Fuel consumption	Urban	TBC
	Extra Urban	TBC
	Combined	TBC
	CO2 emissions	TBC
	Weight distribution	TBC
	Fuel tank capacity	TBC
<b>Dimensions</b>		
Luggage capacity	1121 - 50kg	
Wheelbase	2300 mm	
Track - front	1457 mm	
Track - rear	1506 mm	
Overall length	3797 mm	
Overall width (door mirrors excluded)	1727 mm	
Overall width (door mirrors included)	1850 mm	
Overall height (unladen)	1159 mm	
Overhang - front	805 mm	
Overhang - rear	692 mm	
Mid-laden ground clearance	130 mm	
Unladen vehicle mass (running order, full tank of fuel, no occupants, no luggage)	908 kg	

Lotus reserves the right to change or amend specifications and options at any time. All specifications and options are correct at time of going to press. To check specifications please contact your nearest official Lotus Cars dealer.

		Exige Cup 190	Exige Cup 240	
Price - RRP excluding vat	Standard Colours	€ 47,620.69	€ 56,034.48	Option prices (RRP ex vat)
POWERTRAIN SPECIFICATION				
2ZZ-GE engine with VVTL-i		S	S	
M62 Roots-type positive displacement supercharger		NA	S	
Single air-to-air charge cooler		NA	S	
Twin oil coolers		S	S	
Engine oil accumulator unit		S	S	
C64 6-speed close ratio gearbox		S	S	
Sports-type clutch plate and heavy duty clutch cover		S	S	
Torsen-type limited slip differential		S	S	
Switchable traction control		S	S	
Level 1 stainless steel sports exhaust - 96.9 dB(A)		ASO	S	
Level 2 stainless steel sports exhaust - 104.0 dB(A)		ASO	ASO	
VEHICLE SPECIFICATION				
Air conditioning unit		O	O	€ 1,641.18
Cross-drilled brake discs		S	S	
Up-rated brake pads and stainless steel braided hoses kit		O	S	€ 513.04
ABS with servo assisted brakes		S	S	
Race suspension (2-way adjustable dampers and ride height)		S	S	
Adjustable front anti-roll bar		S	S	
Double shear track control arm brace		S	S	
16 spoke lightweight cast alloy wheels	Hi-power silver finish	S	S	
Yokohama Advan A048 LTS tyres		S	S	
Tyre puncture repair aerosol		S	S	
Tool kit		S	S	
Lotus Sport build plate		S	S	
SAFETY SPECIFICATION				
4-point harnesses*	Black	S	S	
BS4 T45 steel roll-over hoop and struts		S	S	
BS4 T45 steel A-frame with harness mounts		S	S	
6-point roll-cage (FIA approved)		S	S	
Mechanical ignition kill switch (Cockpit and external switch location)		S	S	
Electrical fire extinguisher system (cockpit and external switch location)		S	S	
EXTERIOR SPECIFICATION				
Auxillary front driving lights		S	S	
Solid paint	(see colour chart for options)	S	S	
Metallic paint	(see colour chart for options)	O	O	€ 776.47
Lifestyle paint	(see colour chart for options)	O	O	€ 1,188.11
Custom paint	(see colour chart for options)	O	O	POA
Door mirror covers	Body colour	S	S	
AERODYNAMIC AIDS				
Front splitter	Black	S	S	
Side air scoops	Black	S	S	
Rear wing	Black	S	S	
3-piece rear diffuser anodised finish	Black	S	S	
Sill stone-chip protection film	Clear	S	S	
front mud-flaps		S	S	
INTERIOR SPECIFICATION				
Carpet mats	Black	S	S	
Lightweight aluminium passenger foot-rest		S	S	
Sport interior:				
Suede-effect / carbon-effect leather ProBax sport seats with embroidered Exige logo	Black	within pack	within pack	
Acrylic capped door panels	Silver finish	within pack	within pack	
carbon-effect leather door inserts	Black	within pack	within pack	
Polished aluminium window winders		S	S	
Glove dash panel	Black	S	S	
Face-level air vents		S	S	
Lightweight aluminium foot-well divider		S	S	

## INTERIOR SPECIFICATION

### Sport interior:

Plain /perforated leather steering wheel with glove centre	Black	S	S
Perforated leather gear-lever gaiter	Black	S	S
Polished aluminium gear-knob		S	S
Polished aluminium handbrake sleeve		S	S
Polished aluminium heater control knobs		S	S

## ENTERTAINMENT AND SECURITY SPECIFICATION

Deactivation of immobiliser and alarm	S	S
---------------------------------------	---	---

## PAINT COLOUR CHART

### Solid Paint:

Ardent Red, British Racing Green, Saffron Yellow

### Metallic Paint:

Starlight Black, Polar Blue, Magnetic Blue, Nightfall Blue, Racing Green, Aubergine Purple, Canyon Red, Arctic Silver, Storm Titanium, Aspen White, Solar Yellow

### Lifestyle Paint:

Phantom Black, Laser Blue, Autumn Gold, Krypton Green, Graphite Grey, Chrome Orange, Chilli Red

### Custom Paint:

Paint to sample (factory to confirm)

## KEY

S = STANDARD

O = OPTION

NCO = NO COST OPTION

DO = DELETE OPTION (NO COST)

POA = PRICE ON APPLICATION

NA = NOT AVAILABLE

ASO = AVAILABLE THROUGH ASO

## NOTES

\* = TRACK USE ONLY - Supplied in the boot for dealer fitment at customer's request

Unless specifically agreed in writing, Lotus will not undertake any modification that might be required to meet market legislative and / or homologation requirements.

Vehicles are sold under the condition that the buyer ensures it meets and complies with local import, tax, legal or homologation regulations.

Lotus reserves the right to change vehicle specification and price at any time.

## *standard*

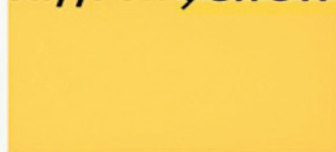
*ardent red*



*british racing green*

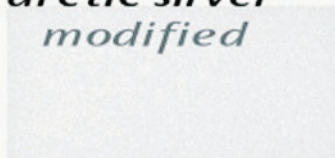


*saffron yellow*

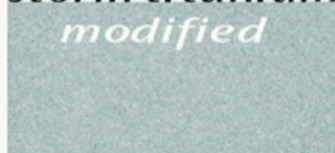


## *metallic*

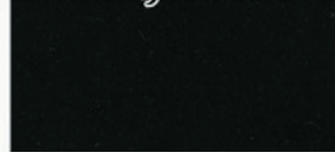
*arctic silver*  
*modified*



*storm titanium*  
*modified*



*starlight black*



*aubergine purple*



*nightfall blue*



*magnetic blue*



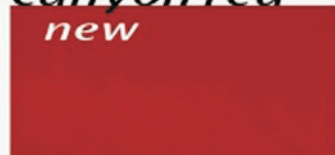
*polar blue*



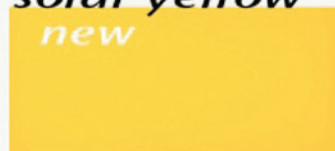
*racing green*  
*modified*



*canyon red*  
*new*



*solar yellow*  
*new*



## *lifestyle*

*aspen white*  
*new*



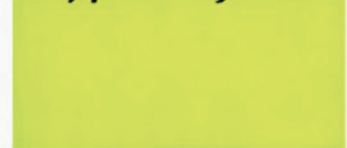
*chilli red*  
*new*



*chrome orange*



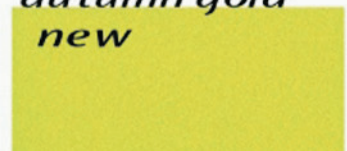
*krypton green*



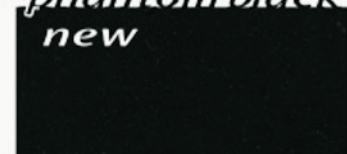
*laser blue*  
*modified*



*autumn gold*  
*new*



*phantom black*  
*new*



*araphite*  
*modified*

